





We don't believe
in moving to a new
place and replicating
the one you left
behind.
Where's the fun in
that?

- ANDREW FISHER

Prospace is a one stop shop
specialized in designing and building
F&B outlets, Commercial space and
Residential units.



OUR VALUES

We provide clients with space that reflects their brand's image, through an efficient work process that is delivered on time and within budget. With more than 30 years of cumulative experience in the field, Prospace is proud to bring it's professional approach and exceptional service to the market. We aim to have long-term relationships with clients and therefore never compromise on professionalism, time and quality.





WHY PROSPACE

- We are flexible in our designs
- We are time and quality oriented
- We understand the requirements of our clients
- We have responsible and professional staff
- We employ best talents on sites to execute and realize designs
- We initiate follow ups
- We have more than 30 years of cumulative experience
- We are transparent and honest



ABOUT PROSPACE

The highly qualified and experienced Prospace team is here to make the process streamlined and efficient. We understand the work-flow and functionality of different industries and merge that with cutting edge designs that inspire serenity, creativity and a sense of good living to deliver your dream environment.

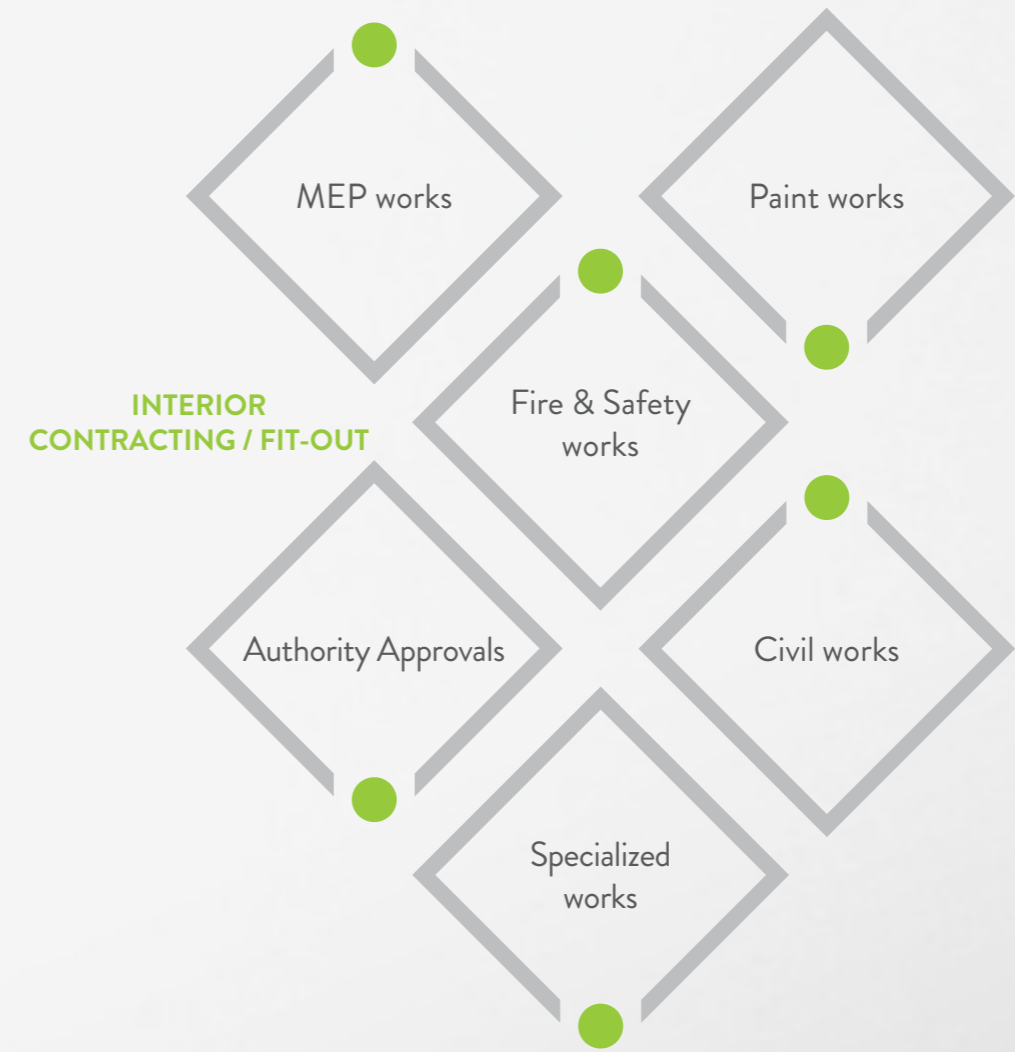
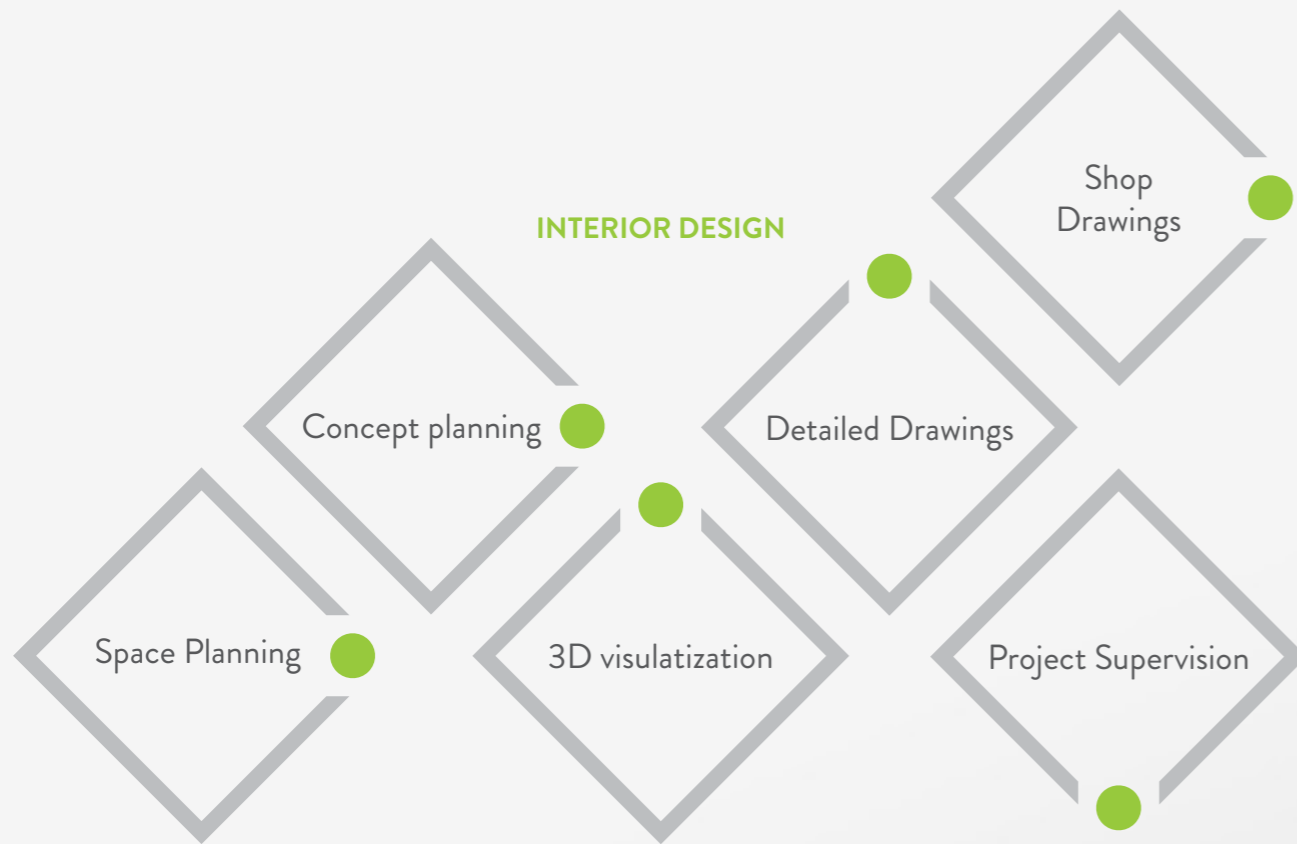
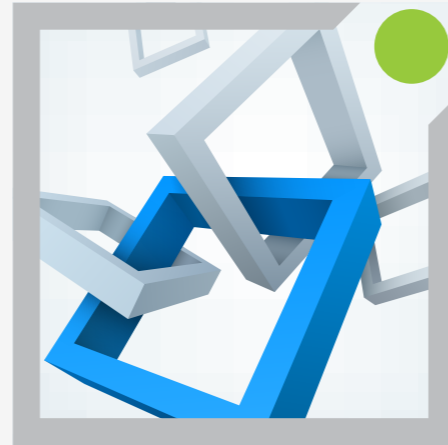
Creating the ideal environment leads to greater productivity, increased revenue, higher client and staff retention and increased referrals. Not to mention the wow factor that will ensure both clients and staff enjoy the perfect space we have created for years to come.



SERVICES

TURNKEY PROJECT

Prospace offers to its clients tranquility and piece of mind by acting as their one stop shop. This guarantees faster completion time, better coordination and best results within budgets.





PROJECTS



Project Highlight

- Scope: Full fit-out by Prospace
- Size: 580 sqm
- Project Type: F&B
- Location: Novotel Hotel - Al Barsha





Project Highlight

- Scope: Full fit-out By ProSpace
- Size: 170 sqm
- Project Type: F&B
- Location: Mirdif City Centre - Dubai





Project Highlight

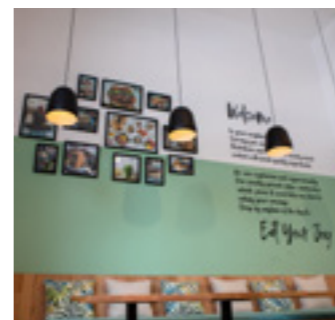
- Scope: Turnkey Project
- Size: 1,500 sqft
- Project Type: F&B
- Location: Pullman JLT





Project Highlight

- Scope: Full fit-out by Prospace
- Size: 100 sqm
- Project Type: F&B
- Location: Dubai Internet City



Project Highlight

- Scope: Full fit-out by Prospace
- Size: 120 sqm
- Project Type: F&B
- Location: Dubai Internet City



Project Highlight

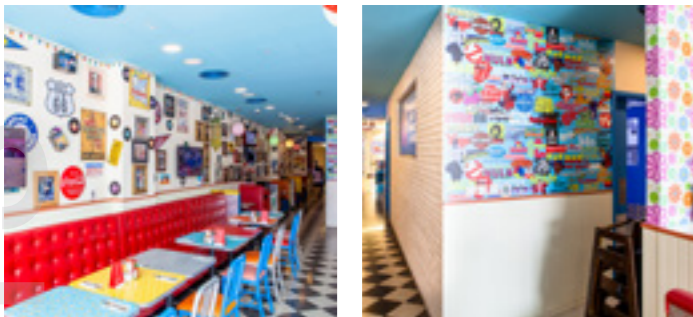
- Scope: Turnkey Project
- Size: 250 sqm
- Project Type : F&B
- Location: JLT - Dubai



Project Highlight

- Scope: Turnkey Project
- Size: 200 sqm
- Project Type: F&B
- Location: JLT - Dubai





Project Highlight

- Scope: Turnkey Project
- Size: 3000 sqft
- Project Type: F&B
- Location: Burjuman Center - Dubai



Project Highlight

- Scope: Turnkey Project
- Size: 1500 sqft
- Project Type: F&B
- Location: Shindagha Mall - MAF - Dubai

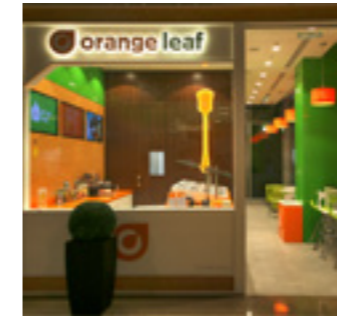
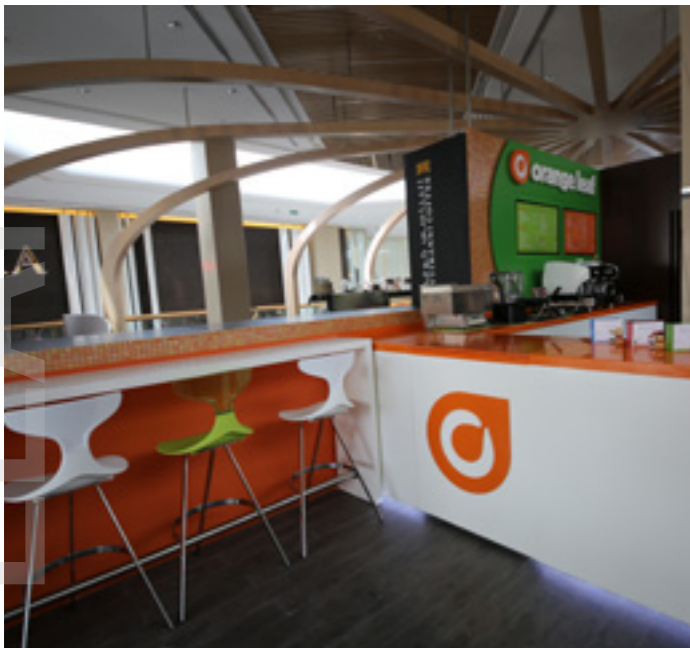




orange leaf

Project Highlight

- Scope: Turnkey Project
- Size: 3500 sqft
- Project Type: F&B
- Location: The Mall - Dubai



Project Highlight

- Scope: Turnkey Project
- Size: 1,500 sqft
- Project Type: F&B
- Location: The Dubai Mall

orange leaf





Project Highlight

- Scope: Turnkey Project
- Size: 6000 sqft
- Project Type: F&B
- Location: YAS Mall - Abu Dhabi

Project Highlight

- Scope: Turnkey Project
- Size: 2400 sqft
- Project type: F&B
- Location: Dubai Media City

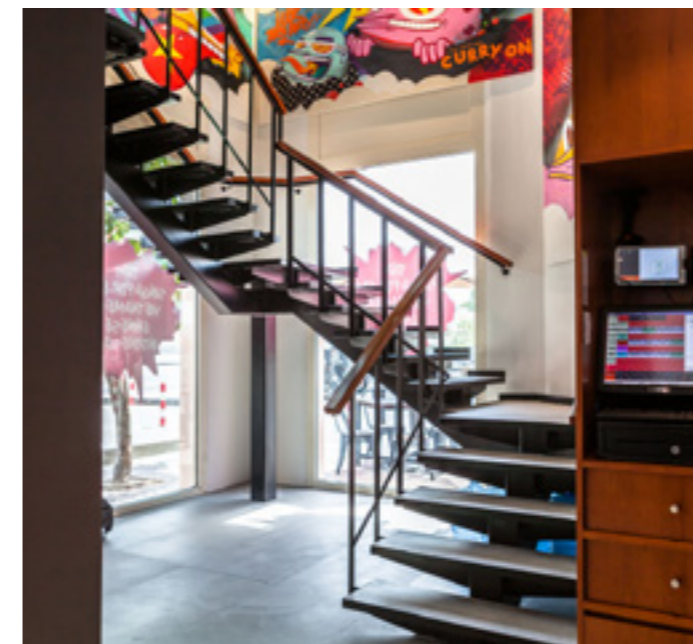


LEMONGRASS

CHEF EXPRESS



Kava & Chai



Project Highlight

- Scope: Turnkey Project
- Size: 3500 sqft
- Project Type: F&B
- Location: American University of Sharjah



Project Highlight

- Scope: Turnkey Project
- Size: 3,500 sqft
- Project Type: F&B
- Location: Al Murooj Complex - Dubai



beef & bass



Project Highlight

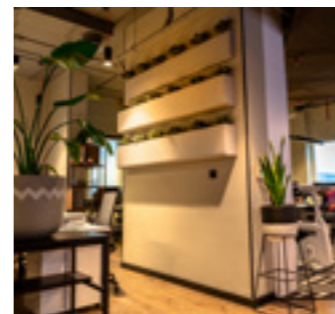
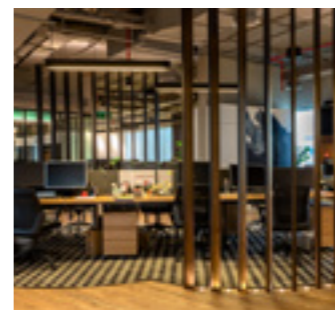
- Scope: Turnkey Project
- Size: 8000 sqft
- Project Type: F&B
- Location: Al Salam Towers





Project Highlight

- Scope: Turnkey Project
- Size: 1200 sqm
- Project Type: Headquarter
- Location: Dubai Media City



ACCOR

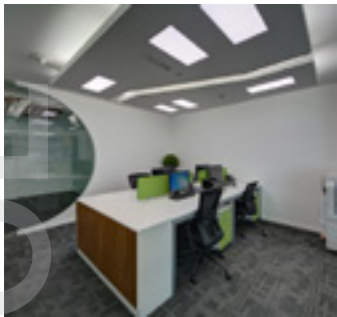
ACCOR



PROSPACE
interior decoration



biddi®



Project Highlight

- Scope: Turnkey Project
- Size: 1400 sqft
- Project Type: Commercial
- Location: Dubai Media City



Project Highlight

- Scope: Turnkey Project
- Size: 3500 sqft
- Project Type: Commercial
- Location: Dubai Media City

PROSPACE

BIDDI



DALE CARNEGIE TRAINING®



Project Highlight

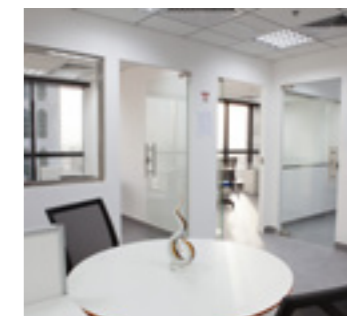
- Scope: Turnkey Project
- Size: 1200 sqft
- Project Type: Commercial
- Location: JLT



digital venture

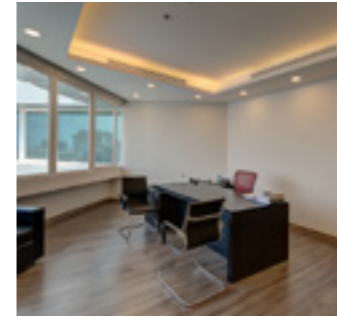
Project Highlight

- Scope: Turnkey Project
- Size: 4000 sqft
- Project Type: Commercial
- Location: Dubai Media City



DIGITAL VENTURE

DALE CARNEGIE



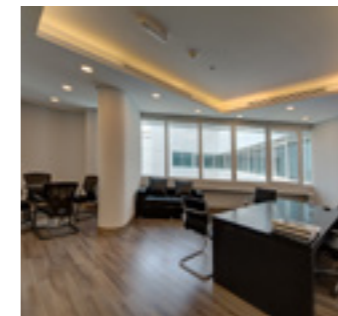
Project Highlight

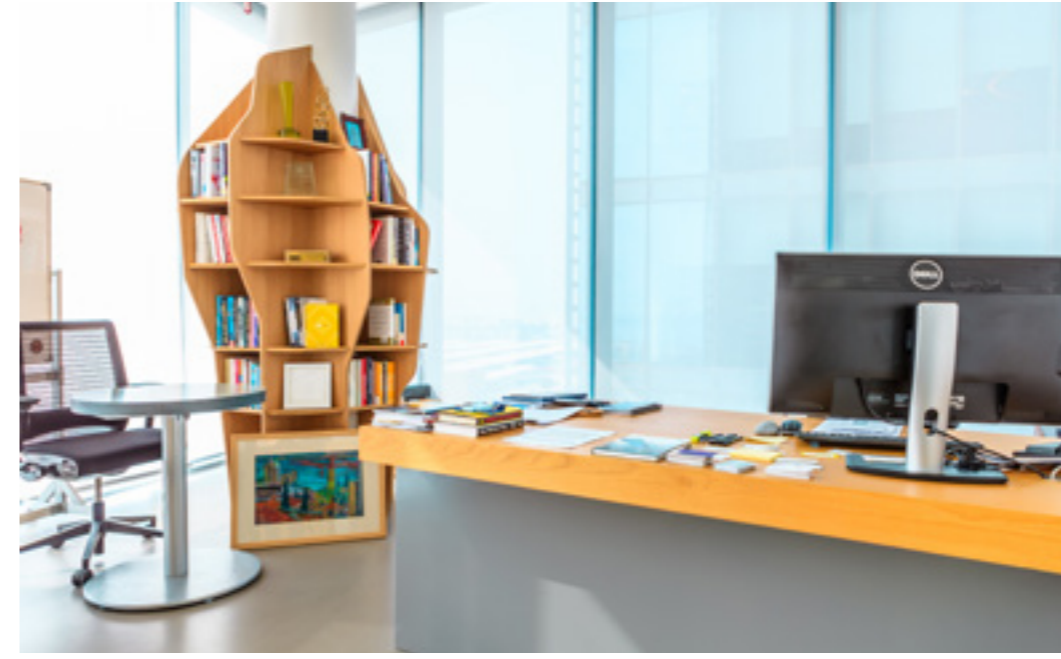
- Scope: Turnkey Project
- Size: 6000 sqft
- Project Type: Commercial
- Location: Dubai Media City



Project Highlight

- Scope: Turnkey Project
- Size: 1000 sqft
- Project Type: Commercial
- Location: Dubai Media City





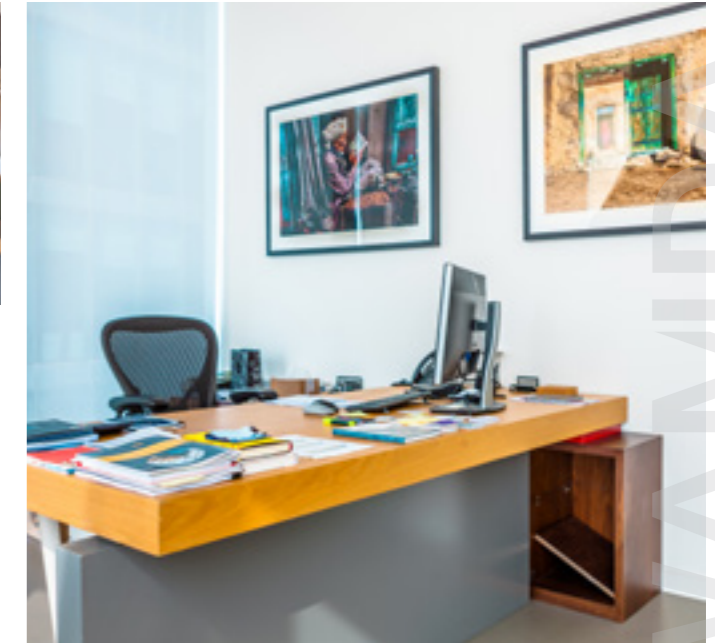
Project Highlight

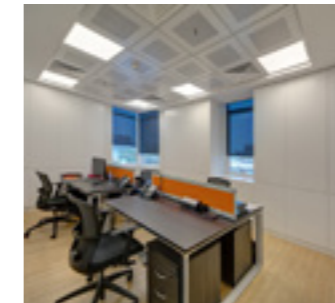
- Scope: Turnkey Project
- Size: 3500 sqft
- Project Type: Commercial
- Location: Dubai Design District - D3 - Dubai



Project Highlight

- Scope: Turnkey Project
- Size: 2750 sqft
- Project Type: Commercial
- Location: Knowledge Village - Dubai





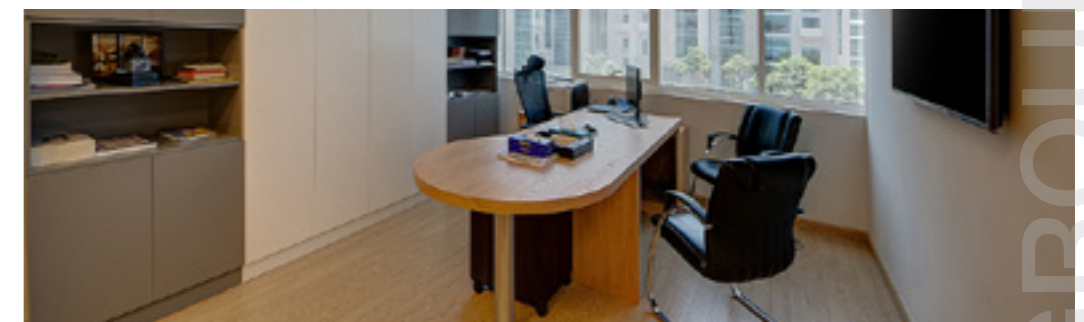
SCIENCE & SUNSHINE

Project Highlight

- Scope: Turnkey Project
- Size: 2500 sqft
- Project Type: Commercial
- Location: Dubai Media City

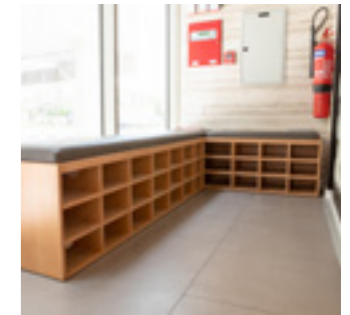
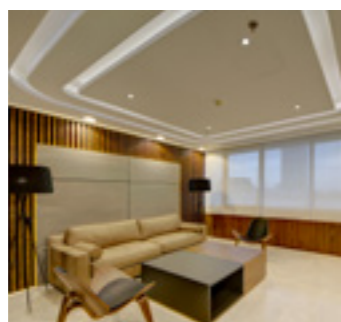
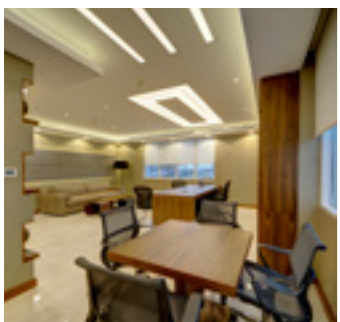
Project Highlight

- Scope: Turnkey Project
- Size: 3000 sqft
- Project Type: Commercial
- Location: Dubai Media City





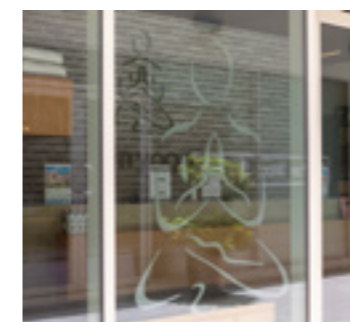
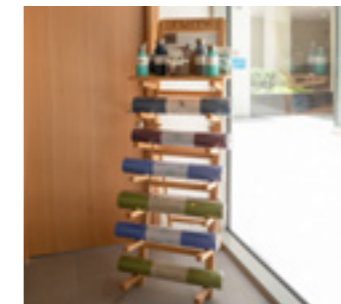
G&Co.

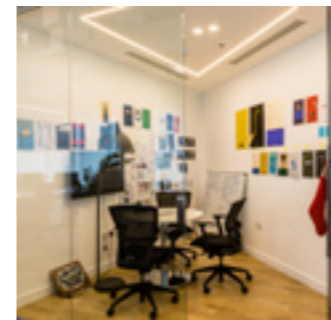
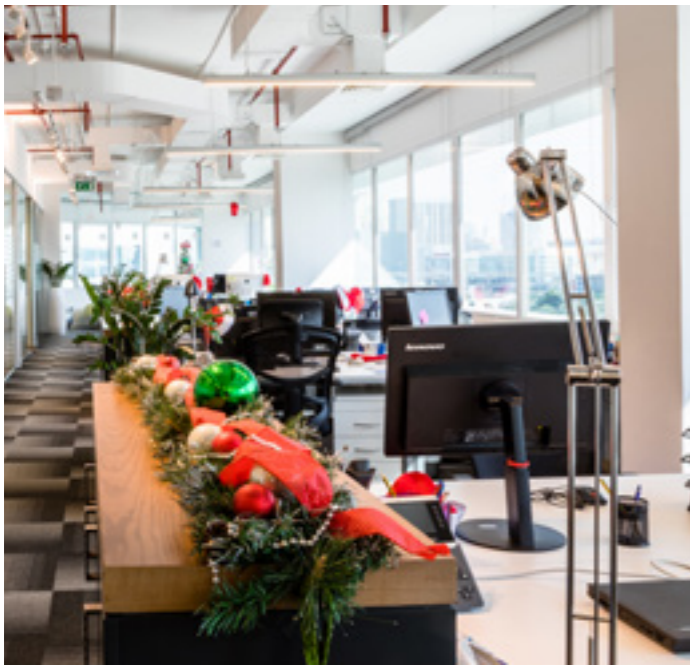


- Project Highlight**
- Scope: Turnkey Project
 - Size: 3500 sqft
 - Project Type: Commercial
 - Location: Umm El Sheif - Dubai



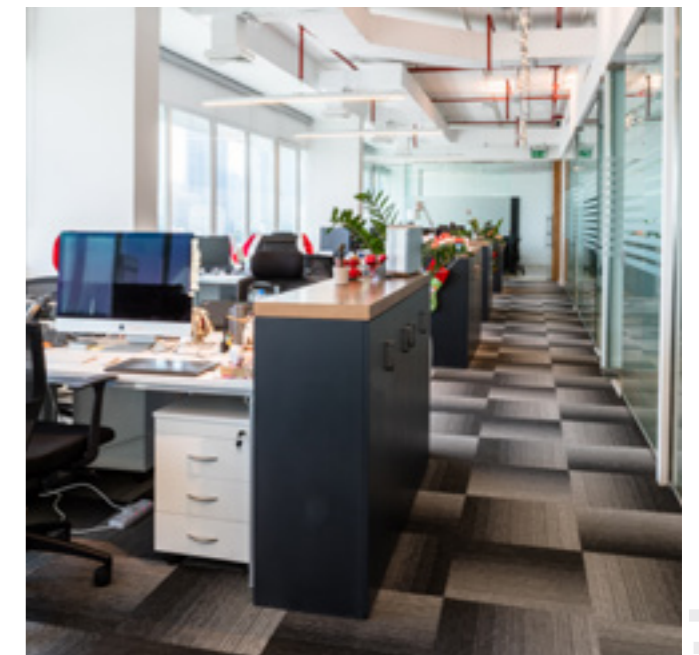
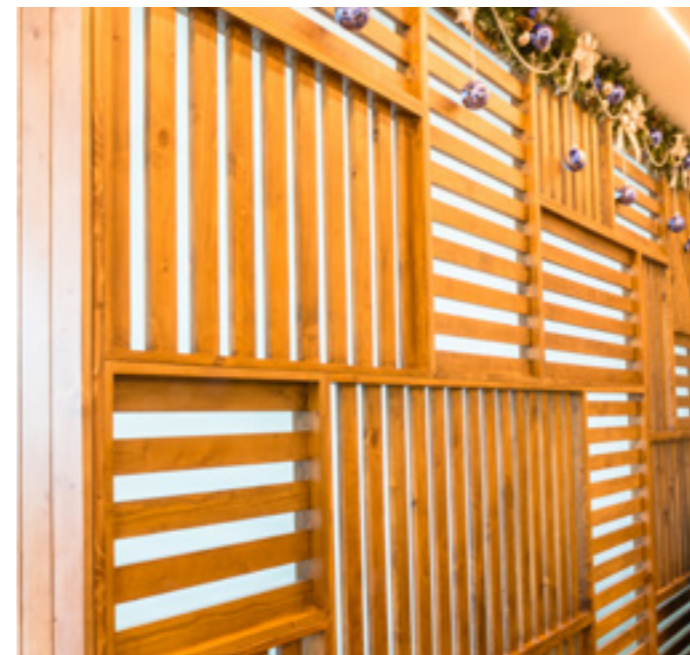
- Project Highlight**
- Scope: Turnkey Project
 - Size: 2500 sqft
 - Project Type: High End Commercial
 - Location: Dubai Media City

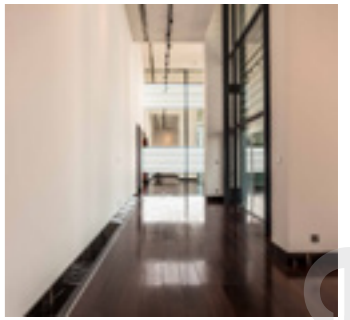
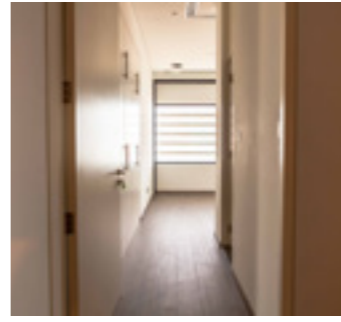
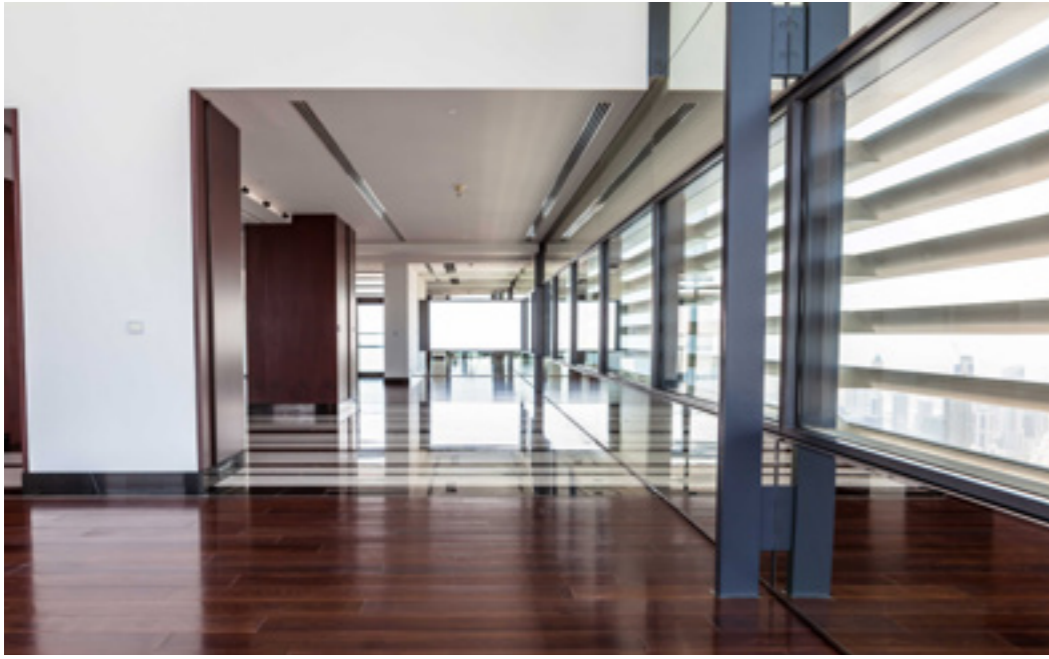




Project Highlight

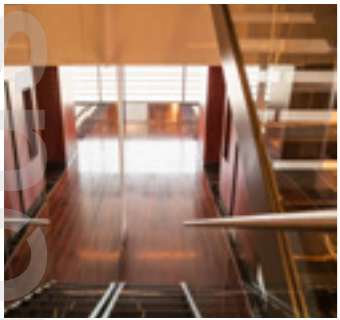
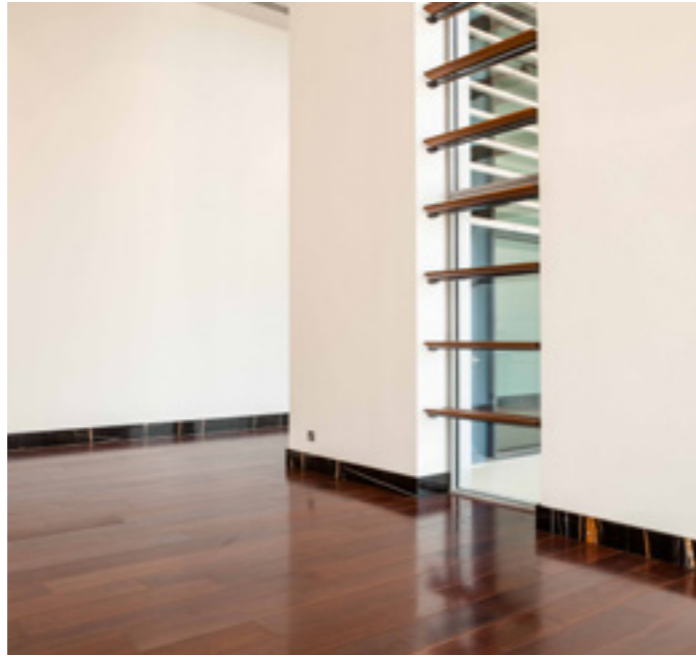
- Scope: Turnkey Project
- Size: 1,500 sqft
- Project Type: Commercial
- Location: Dubai Media City





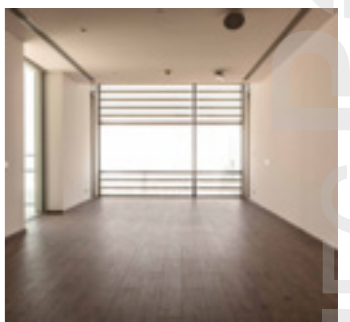
DIFC

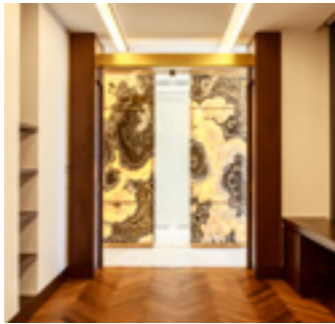
Triplex Private Penthouse



Project Highlight

- Scope: Turnkey Project
- Size: 10,000 sqft
- Project Type: Residential
- Location: Dubai International Financial Center



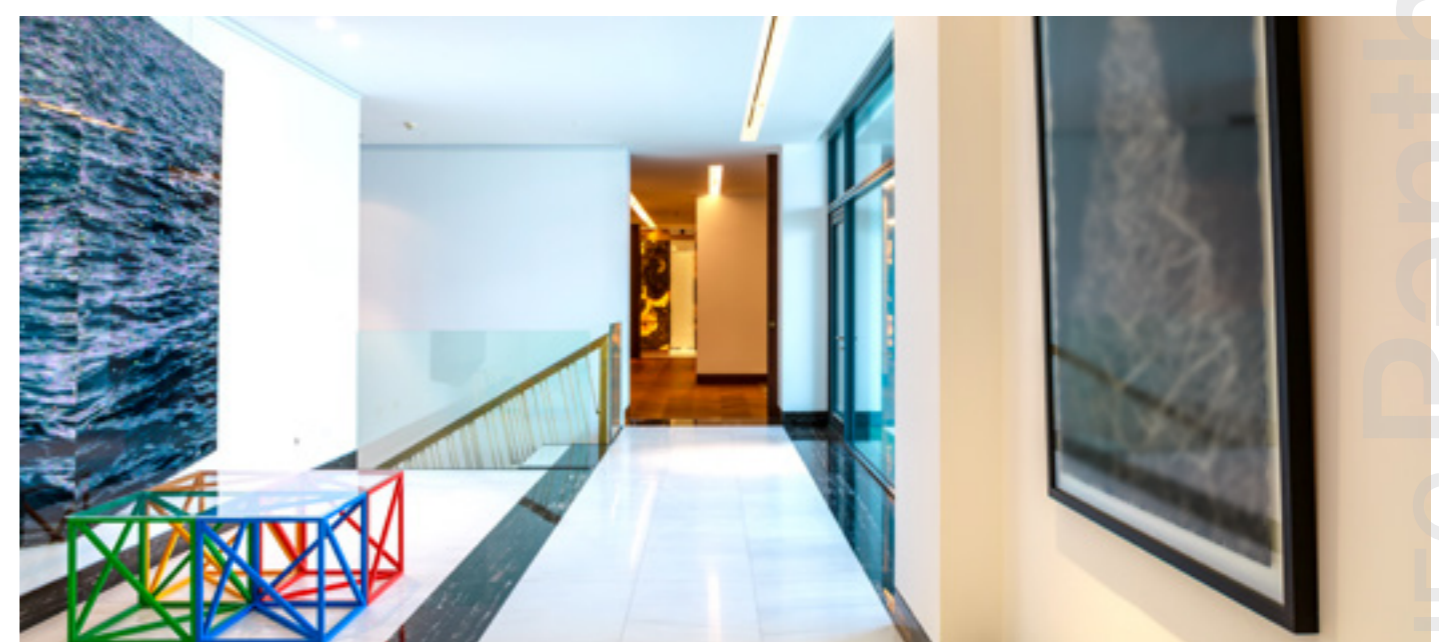
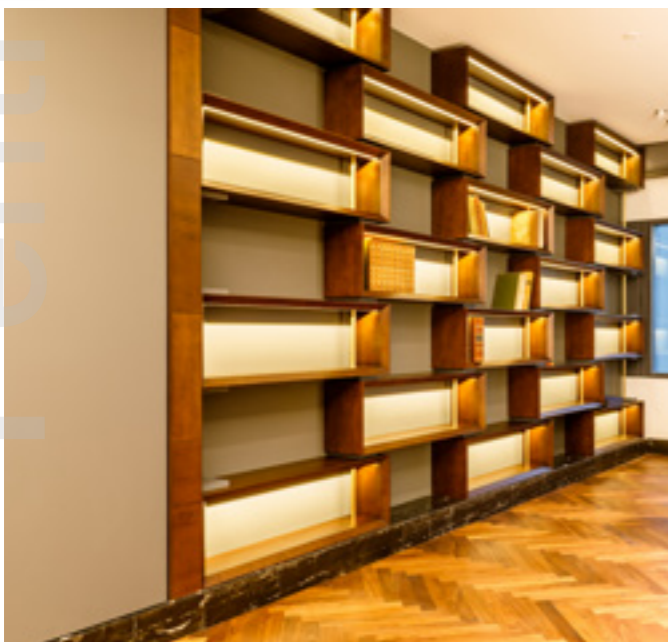
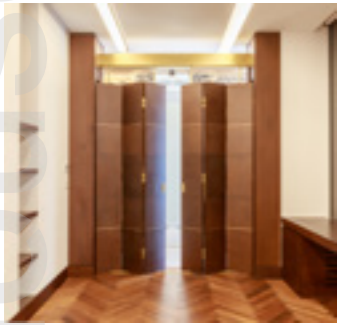


DIFC

Duplex Private
Penthouse

Project Highlight

- Scope: Turnkey Project
- Size: 10,000 sqft
- Project Type: Residential
- Location: Dubai International Financial Center



PARTIAL LIST OF CLIENTS & PROJECTS



F&B Projects

- Chef Express (Media City – ZEE Building)
- FMART (Masdar City – Emaco Food)
- Tapa King (MAF Shindagha – Landmark Zenath Group)
- Beef & Bass (Grand Sheraton Hotel – JAS Group)
- Big Daddy's (Burjuman Center – Landmark Zentah)
- Orange Leaf (The Dubai Mall – 2spoons)
- Orange Leaf (Mall of the Emirates – 2spoons)
- Orange Leaf (Mirdif City Center – 2spoons)
- Orange Leaf (The Mall – 2spoons)
- Orange Leaf (Kite Beach Meraas – 2spoons)
- Lemongrass (YAS Mall Abu Dhabi – Landmark Zenath)
- Barrio Fiesta (Ramada Hotel Deira – Landmark Zenath)
- Via Vita (JVC 2 JLT – JAS Group)
- Sunnyvile (JVC 2 – JAS Group)
- Asian 5 (Murouj Rotana – Living Brands)
- Kava & Chai (American University of Sharjah – CE Ventures)
- Cereal Killer Café (The Dubai Mall – Al Rashedeen Group)



Other Projects

- 2 spoons Head office (Dubai Media City)
- All Prints offices (Dubai Media City)
- BIDDI Head Office (Dubai Media City)
- Dale Carnegie Head Office
- DBD Holding Head Office (Sheikh Zayed Road)
- Deepblack Head Office (JLT - Dubai)
- Digital Venture Head Office
- Frontier IQ Head Office
- G&Co Head Office (Dubai Media City)
- Group Plus Head Office (Dubai Media City)
- Menacom Group Head Office (Dubai Media City)
- Science & Sunshine Head Office (Dubai Media City)
- WAMDA Capital (D3 - Dubai)
- Emirates Flight Catering Division
- Q Square Office (Dubai Media City)
- Accor Hotels Head Office (Dubai Media City)
- Mr. Khaled Samawi PentHouse (DIFC)
- Mr. Taimur Hassan Duplex (DIFC – Index Tower)
- High Hopes (Jumeirah)
- Tarjama FZ LLC (D3 - Dubai)
- Zen Yoga Branch (Jumeirah)



CONTACT US



📍 Sidra Tower,
Dubai Media City
P.O.Box 391006
Dubai - UAE

☎ +971 4 277 6510
📠 +971 4 277 6411
✉ info@prospace.ae
🌐 www.prospace.ae